

Service Layer Credits: Sources: Esri, HERE, Garmin, USGS, Intermap, INCREMENT P, NRCan, Esri Japan, METI, Esri China (Hong Kong), Esri Korea, Esri (Thailand), NGCC, © OpenStreetMap contributors, and the GIS User Community

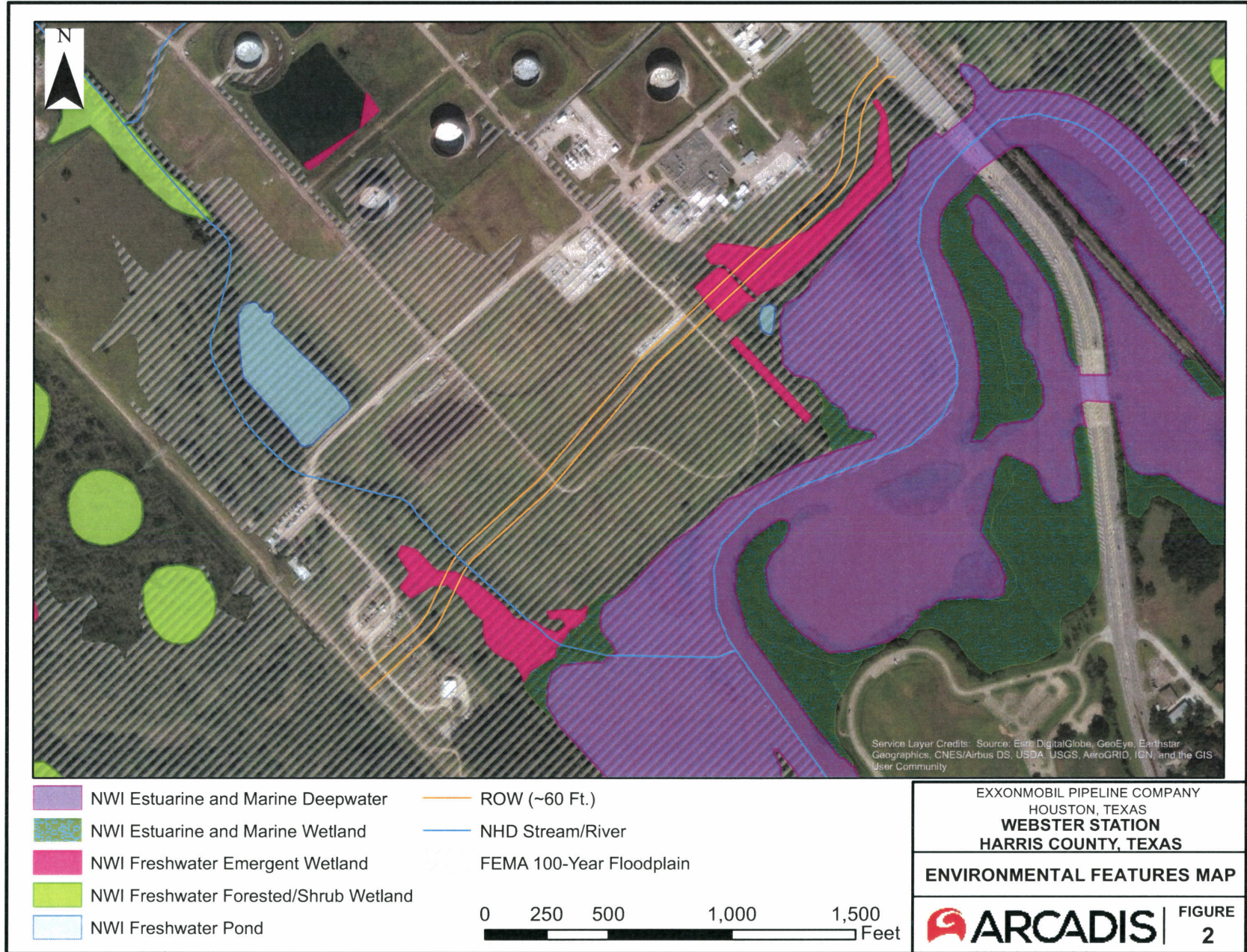
— PROJECT ROW



EXXONMOBIL PIPELINE COMPANY
HOUSTON, TEXAS
WEBSTER STATION
HARRIS COUNTY, TEXAS

VICINITY MAP


 **ARCADIS** | FIGURE 1

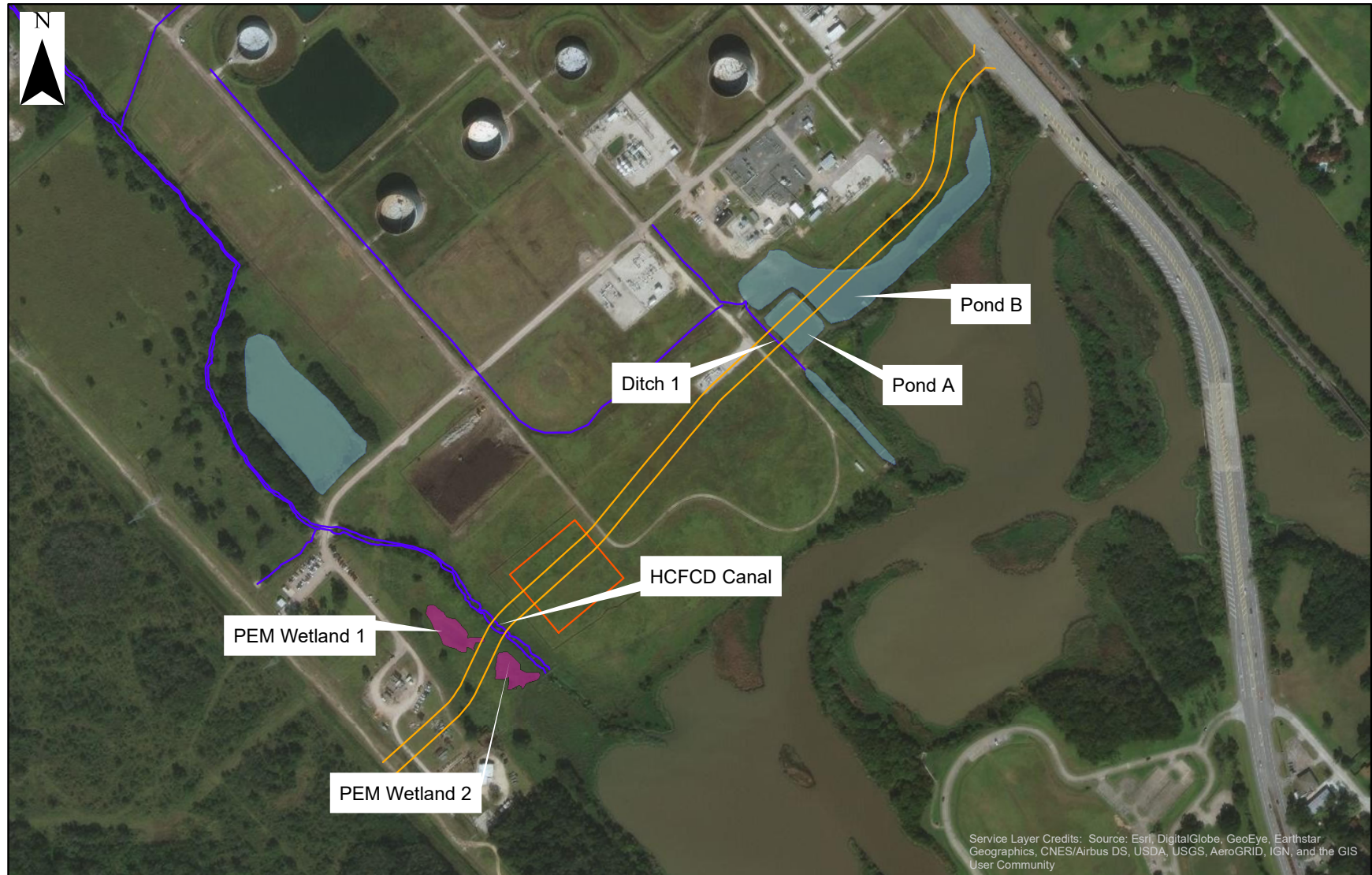


Service Layer Credits: Source: Esri, DigitalGlobe, GeoEye, Earthstar Geographics, CNES/Airbus DS, USDA, USGS, AeroGRID, IGN, and the GIS User Community

EXXONMOBIL PIPELINE COMPANY
HOUSTON, TEXAS
WEBSTER STATION
HARRIS COUNTY, TEXAS

ENVIRONMENTAL FEATURES MAP

 **ARCADIS** | FIGURE 2

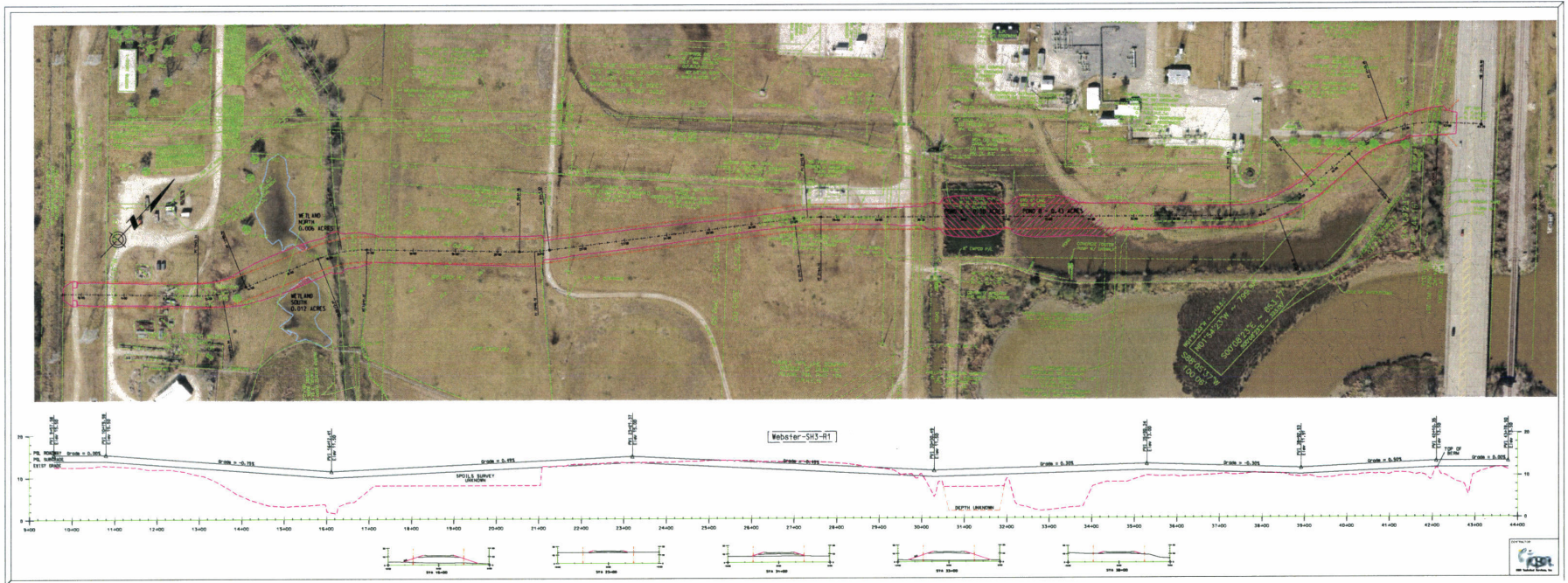


- ROW (~60 Ft.)
- Mapped Stream Features
- Freshwater Pond
- Palustrine Emergent Wetland (PEM)
- Soil Stockpile



EXXONMOBIL PIPELINE COMPANY HOUSTON, TEXAS WEBSTER STATION HARRIS COUNTY, TEXAS	
SITE DETAILS MAP	
ARCADIS	FIGURE 2

Document Path: C:\GIS\EMPC\Webster Tank Expansion\GIS\GIS Mapping_L4_27_2020\WebsterStation_SiteDetailsMap.mxd



JUL 15 2020